

BENEFITS SUMMARY

Employee / Consultant Benefits

PEI strongly believes in exceeding consultants' expectations because we understand that happy consultants are more productive in the workplace. We are proud to offer all of our consultants the following benefits:

- ◆ Medical/Dental/Vision Insurance
- ◆ AFLAC Supplemental Insurance
- ◆ 401K Savings Plan
- ◆ Credit Union Membership
- ◆ Multi-Account Direct Deposit
- ◆ Paid vacation accrual plan
- ◆ Pre-payment of travel expenses
- ◆ Exclusive membership to company sponsored programs

Client Benefits

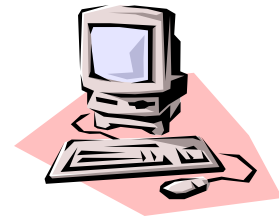
PEI is committed to **total** client satisfaction. If there is any special service you need, just ask. Because our interest is in meeting your needs, PEI strives to be flexible enough to meet most requests.

- ◆ Dedicated Account Managers
- ◆ Over 10 Years of Local Expertise
- ◆ Flexible Guarantee Periods
- ◆ Online skills testing
- ◆ Reference Checking (at least 3 professional references)
- ◆ Optional Drug/Background Checks



COMPANY SERVICES & PROFILE

*Joining the Worlds of Business with
Technology Professionals since 1989*



PERSONAL ENTERPRISES, INC.

910 Second Street, Suite 200
Sacramento, CA 95814

916.567.1500 * 1.800.567.1525

916.567.1599 Fax

www.PersonalEnterprises.com

Tel: 1.800.567.1525

COMPANY PROFILE

Whatever your technical personnel needs, PEI is committed to providing you with only the most qualified contract or employment candidates. Because we value and respect your time, we'll be sure not to waste it.

History: Founded in 1989 by a veteran in the IT industry, PEI understands the need to retain knowledgeable technical staff in-house. Our Technical Recruiters are required to have at least 5 years of IT experience in a technical capacity. This requirement enables us to successfully screen candidates on their skill level and to truly understand your specific needs.

Company Database: PEI continually tracks and monitors the availability of thousands of local technical resources via our in-house database. Additionally, our vast referral network, Internet presence, and utilization of special interest groups affords PEI the knowledge and ability to locate quality resources locally or throughout the world.

Objective: PEI is committed to ensuring the satisfaction of both clients and candidates. It is our goal to work in harmony with your



PEI works to truly understand all its clients needs

HR staff to augment your hiring effectiveness. PEI can also act as a virtual HR department, work directly with IT Managers, or any combination .



PROFESSIONAL SERVICES

Contracting: PEI is able to provide immediate access to contract personnel for either short term or long-term assignment. Our contracting rates and benefits have been proven to be among the most competitive in the industry.

Contract-to-Hire: Many of our contract consultants are also available for direct employment. Eligible consultants may be converted to employment after a minimum contract period with no placement fee. Conversion is also available earlier via a prorated fee structure. Many of our clients enjoy the flexibility that this trial-based hiring arrangements affords.

Direct Placement: Put PEI's vast network of employment resources to work for your company with no risk, fee or obligation unless we find the right candidate for you. Placement fees range from 15% to 25% of the starting annual salary and are based upon the desired guarantee period, which ranges from 30 days up to a full 4 months. PEI's guarantees demonstrate our commitment to your complete satisfaction.

INDUSTRY QUALIFICATIONS

Company References: PEI is proud to be a supplier of quality personnel to respected companies such as IBM, Cal Fed Bank, Output Technology Solutions and The State of CA through our California Multiple Award Schedules; CMAS contract #3-01-70-1605A.



Insurance: PEI maintains all appropriate employment insurance and is in full compliance with all Federal and State regulations. PEI also maintains extensive business liability insurance designed to protect our clients' business interests.

NACCB Membership: PEI is proud to be an active member of the **NACCB National Association of Computer Consultant Businesses**. This nonprofit organization was founded to promote fair and ethical business practices in the computer consulting industry. PEI strongly adheres to NACCB's code of ethics and provides fair and ethical service to all its business relationships.

Professional Payroll & Taxing Authorities: PEI utilizes professional service firms to assure regulatory and timely compliance for all taxation and payroll reporting requirements.

PERSONAL ENTERPRISES, INC.

910 Second Street, Suite 200
Sacramento, CA 95814

916.567.1500 * 1.800.567.1525
916.567.1599 Fax
www.PersonalEnterprises.com

Joining the Worlds of Business with Technology Professionals since 1989